

### DASSnet® Security Management Software

Part code	Name	Remarks
11659100	DASSnet® LITE	Limited to 5 controllers. Access control module only. 1 workstation license included
11659200	Upgrade LITE to PRO	Software upgrade from DASSnet® LITE to PRO

Part code	Name	Remarks
11659000	DASSnet® PRO	Unlimited controllers, users and cards. All modules available. 3 workstation licenses included (extendable)
16674000	Additional workstation license	1 additional workstation license for DASSnet® PRO

### DASSnet® PRO Modules

Part code	Name	Remarks
11663000	Visitors management	DASSnet® PRO module.
13384000	Visitors website management	Website for Visitors management module. 3 simultaneous connections
14492000	Visitors website management (1 extra)	1 extra connection for Visitors website management
14120000	Visitors website pre-registration	Website for Visitors management module. Unlimited connections

Part code	Name	Remarks
11668000	Alarms management	DASSnet® PRO module. Unlimited alarms
14495000	CCTV Integration	DASSnet® PRO module. Unlimited NVRs
14496000	Fire panel Integration	DASSnet® PRO module. Unlimited panels
14497000	Intrusion/alarms/perimeter panel Integration	DASSnet® PRO module. Unlimited panels
14801000	Public Address Integration	DASSnet® PRO module. Unlimited messages
11672000	SIP intercom Integration	DASSnet® PRO module. Unlimited intercoms
13386000	Key cabinets Integration	DASSnet® PRO module. 1 license per cabinet

Part code	Name	Remarks
13385000	Lockers/cabinets/drawers management	DASSnet® PRO module. Unlimited lockers
14122000	Vehicles fleet management	DASSnet® PRO module. Unlimited vehicles
11673000	Photo-ID badges design and printing	DASSnet® PRO module. Unlimited templates

Part code	Name	Remarks
14121000	Contractors website management	DASSnet® PRO website service. Unlimited contractors companies. 25 simultaneous connections
14494000	Contractors website management (25 extra)	25 extra connections for Contractors website management

### DASSnet® PRO Attendance Module

Part code	Name	Remarks
11662000	Time & Attendance	DASSnet® PRO module. Unlimited employees
11661000	Time & Attendance (SME)	DASSnet® PRO module. Up to 50 employees
12100000	Employees website	Website for Time & Attendance module. Unlimited connections
13151100	SAP Integration	Integration between SAP and DASSnet® by BAPI HANDLER

### DASSnet® PRO Advance Modules

Part code	Name	Remarks
13151200	Multi-server module	DASSnet® PRO server architecture. 1 additional server
13151300	Multi-site module	DASSnet® PRO server architecture

Part code	Name	Remarks
13151400	Backup server module	DASSnet® PRO server redundancy
13145000	Cluster server module	DASSnet® PRO server redundancy

Part code	Name	Remarks
13151000	DASSnet® SDK library	DASSnet® PRO module. Interaction with external services
13154050	OPC integration	DASSnet® PRO module. Integration with OPC systems

### DASSnet® PRO Mobile App

Part code	Name	Remarks
14499000	DASSmobile® app server	iOS and Android app server. 3 simultaneous smartphones or tablets connections
14731000	DASSmobile® app server (1 extra)	1 extra connection for smartphones or tablets
-	DASSmobile® app	iOS and Android app

# DORLET

## DASSnet®

### DASSnet® specifications

“DASSnet® is modular Security Management Software that integrates in one unique solution the management of all security systems involved on a building”



### SERVER - CLIENT Architecture:



### Recommended Hardware for DASSnet® SERVER:

#### Server Requirements

Processor:	CPU Quad Core
RAM Memory:	4 Gb
HD:	5 Gb of free space
DVD-ROM unit:	YES
Network:	Ethernet (10/100/1000)
Monitor:	Optional
Operating System:	Windows 7 or higer, Windows Server 2012 or higer

### Recommended Hardware for DASSnet® WORKSTATION (Client):

#### Server Requirements

Processor:	CPU Quad Core
RAM Memory:	4 Gb
HD:	5 Gb of free space
DVD-ROM unit:	YES
Network:	Ethernet (10/100/1000)
Monitor:	1280x1024 px. (512 mb or higer graphic card)
Operating System:	Windows 7 or higer, Windows Server 2012 or higer

### Compatible Databases:

#### Server Requirements

SQL	2008 or higer (SQL Express 2012 included)
Oracle	11.2 or higer

# DORLET

DASSnet®

## OVERVIEW



CCTV



FIRE PANELS



INTRUSION PANELS



PUBLIC ADDRESS



KEYS MANAGEMENT CABINET

TCP/IP  
RS-232  
RS-485

Integration of 3rd party security systems



SIP VoIP NETWORK



3<sup>rd</sup> PARTY SIP INTERCOMS

TCP/IP

Integration of the intercom and VoIP communications

# DASSnet®

Security Management Software

TCP/IP

OPC server for the Integration with the Building Management System

Integration with BMS



TCP/IP

Integration with SAP HR module

Integration with SAP



TCP/IP

Integration with enterprise software

Integration with enterprise ERP



AHS

ASD/1

ASD/2

ASD/4

AS/3

TCP/IP

Access control  
Alarms/Intrusion  
Attendance



CARD READERS



SIP INTERCOM + CARD READER



FINGERPRINT



FACE RECOGNITION



CARDS DROPBOX

CONTROLLERS

TCP/IP

Parking access control



PARKING CARD + SIP INTERCOM



LONG DISTANCE READER



LICENSE PLATE READER

DOC

Proximity cards door locks



ELECTRONIC DOOR LOCKS

DOC  
IP / WIRELESS

Proximity cards door cylinders



ELECTRONIC CYLINDERS

DOC

Proximity cards cabinets & drawers locks



ELECTRONIC LOCKERS



ELECTRONIC DRAWERS

TCP/IP

Enrollment workstations



DOCUMENTS OCR



CARD ENCODER



FINGERPRINT ENROLLER



CARD PRINTER

# DORLET

## DASSnet®

### ARCHITECTURES

#### 📁 BASIC ARCHITECTURES

##### -ALL IN ONE PC

The DASSnet® Server and Workstation as well as the database server can be installed on a single PC. This architecture is ideal for small projects.

ACCESS CONTROL EQUIPMENT  
DOOR LOCKS, CYLINDERS (DOC)  
ATTENDANCE  
INTEGRATION SECURITY  
INTEGRATION BMS (OPC)  
INTEGRATION ENTERPRISE ERP  
INTEGRATION COMMUNICATIONS (SIP)

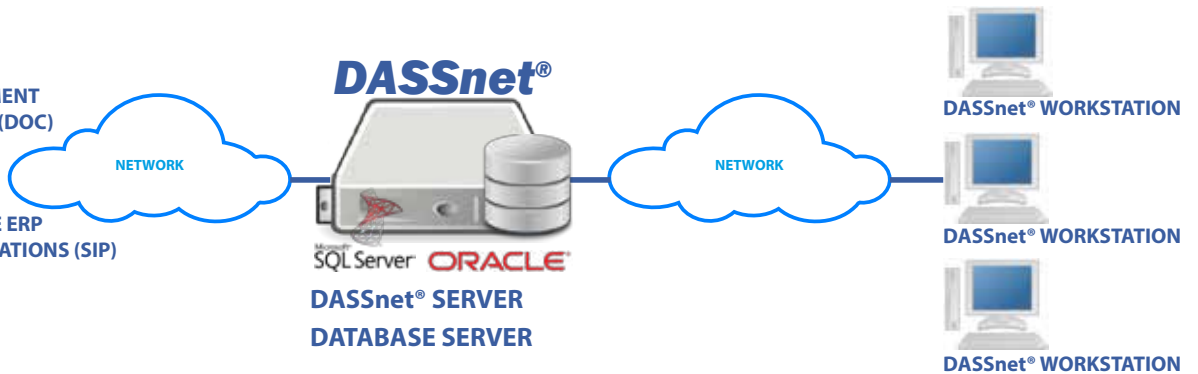


##### -SERVER-CLIENT architecture

The DASSnet® Server and the Database Server can be installed on a dedicated server. This allows to have many DASSnet® workstations working at the same time on different PCs.

This architecture is ideal for medium-large projects where more than one workstation must be able to work simultaneously.

ACCESS CONTROL EQUIPMENT  
DOOR LOCKS, CYLINDERS (DOC)  
ATTENDANCE  
INTEGRATION SECURITY  
INTEGRATION BMS (OPC)  
INTEGRATION ENTERPRISE ERP  
INTEGRATION COMMUNICATIONS (SIP)

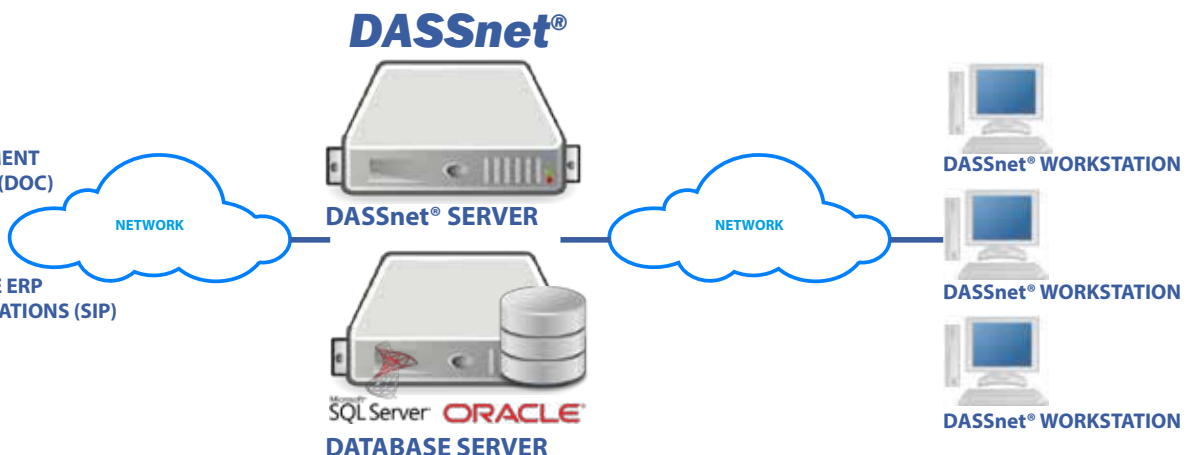


##### -SERVER-CLIENT-DATABASE architecture

The DASSnet® Server is installed on a dedicated server, the Database Server is also installed on a dedicated server, and DASSnet® workstations on separate PCs working at the same time.

This architecture is ideal for large scale projects where more than one workstation must be able to work simultaneously and most important the Database server is on a dedicated server with its own corporate security, policies and redundancy.

ACCESS CONTROL EQUIPMENT  
DOOR LOCKS, CYLINDERS (DOC)  
ATTENDANCE  
INTEGRATION SECURITY  
INTEGRATION BMS (OPC)  
INTEGRATION ENTERPRISE ERP  
INTEGRATION COMMUNICATIONS (SIP)



# DORLET

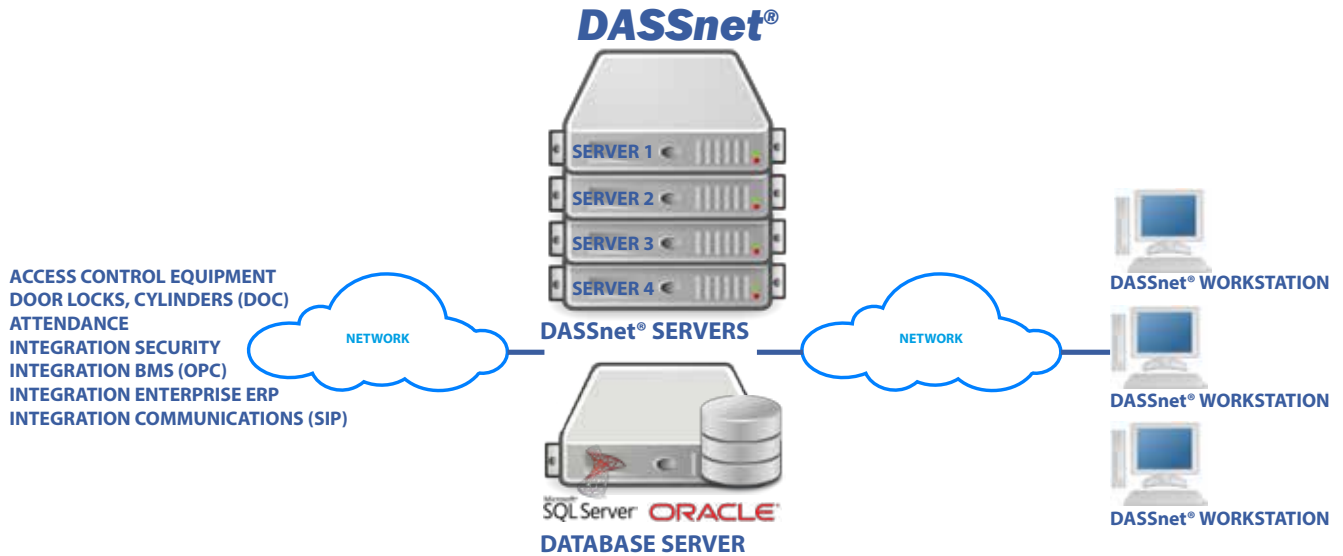
## DASSnet®

### ADVANCE ARCHITECTURES

#### MULTI-SERVER

Part code	Name	Remarks
13151200	Multi-server module	DASSnet® PRO server architecture. 1 additional server

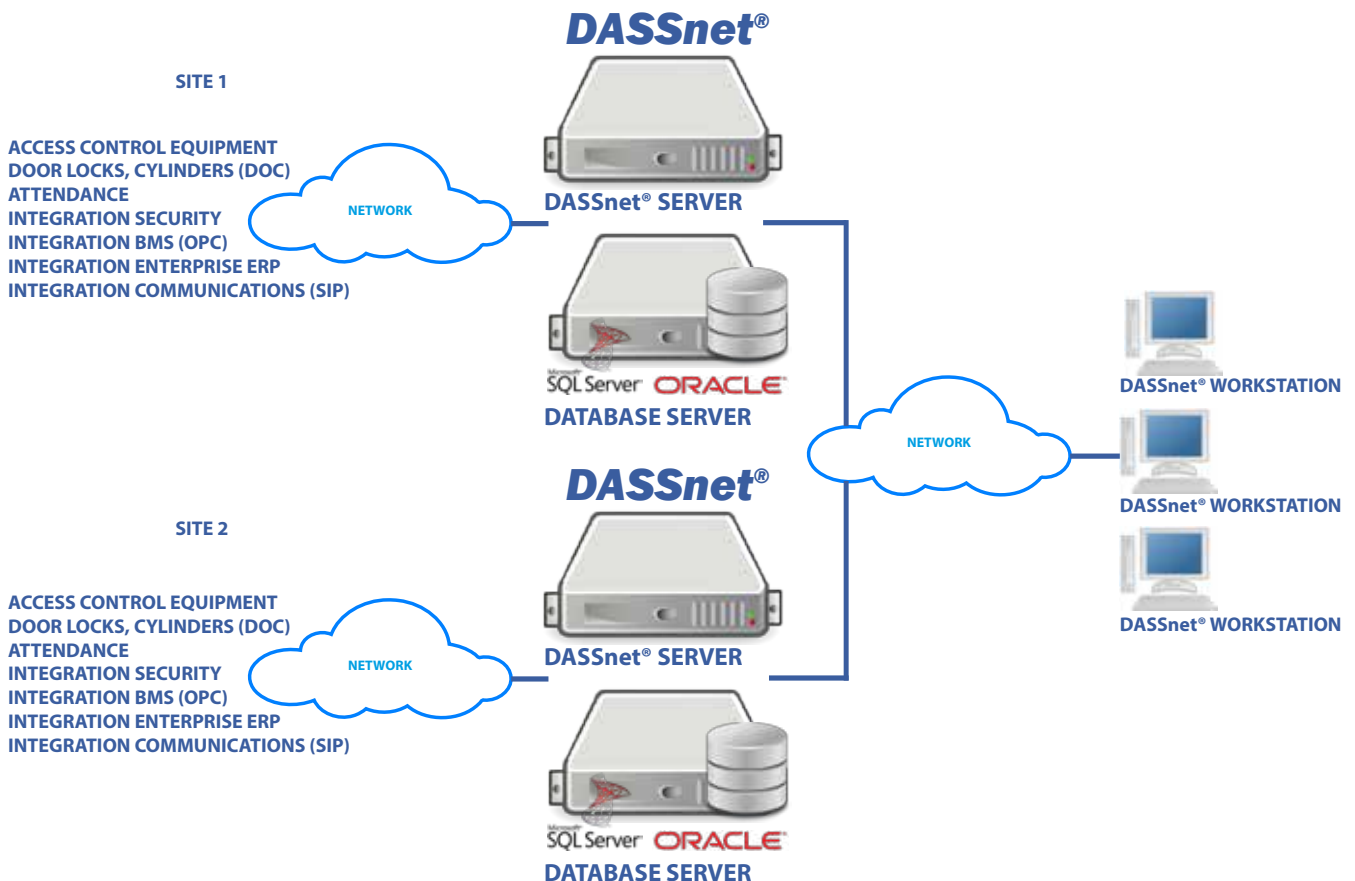
In large scale projects when a large number of controllers and systems are integrated, the processing capacity of one single server might not be able to process all that amount of information. In this Scenario DASSnet® can add a multi-server architecture to share the load and processing of all equipment, making the solution virtually unlimited in the number of controllers and systems integrated.



#### MULTI-SITE

Part code	Name	Remarks
13151300	Multi-site module	DASSnet® PRO server architecture

In large projects or corporations with assets delocalized in different sites or remote locations, the multi-site architecture allows to have the database distributed in each site. This architecture allows first, the complete functional operation of each site, even if the network is down, and second the integration of different sites with different databases as one unique project.





# DORLET

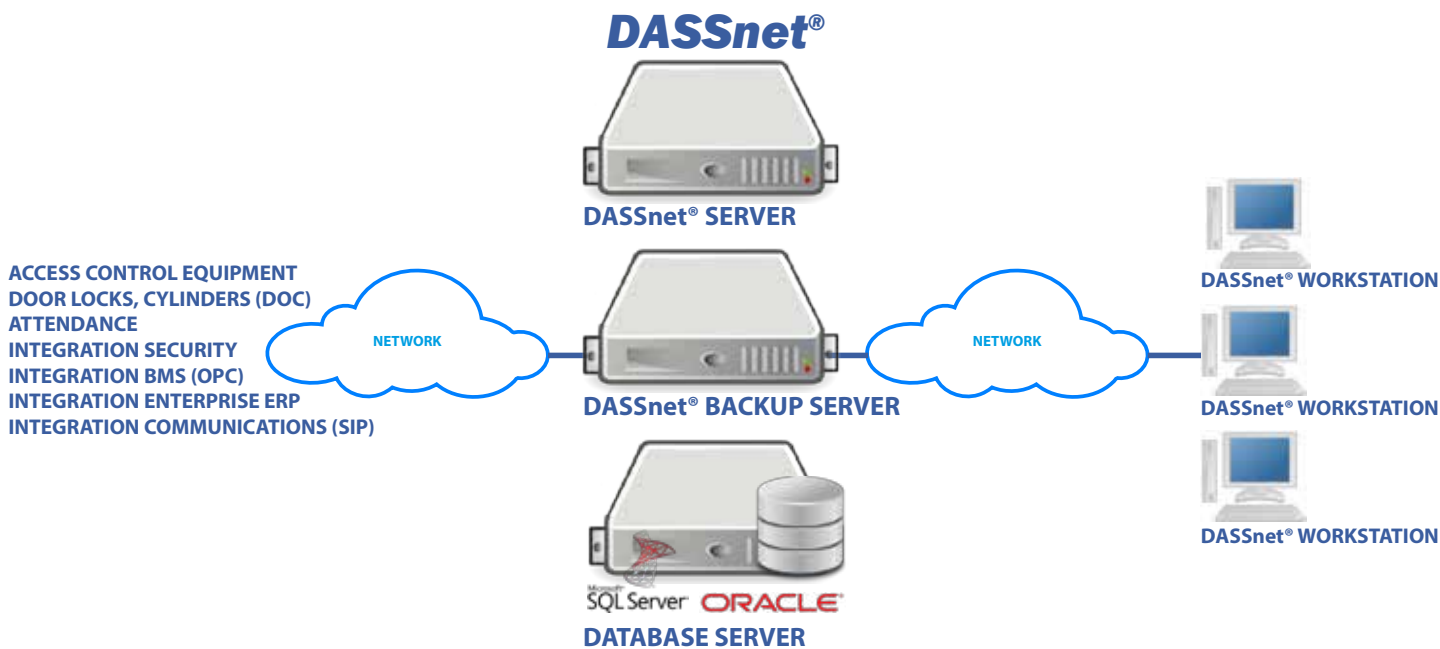
## DASSnet®

### REDUNDANCY ARCHITECTURES

#### 📁 BACKUP SERVER

Part code	Name	Remarks
13151400	Backup server module	DASSnet® PRO server redundancy

The previous architectures can be mixed with high availability and redundancy solutions such as backup server. The backup server takes control of the process when the main server is down. This solution provides uninterrupted service on DASSnet® security solution.



#### 📁 CLUSTER SERVER

Part code	Name	Remarks
13145000	Cluster server module	DASSnet® PRO server redundancy

In high availability and redundancy solutions where a Microsoft Cluster Server is required, DASSnet® is able to work in this scenario. The failover Cluster provides a very high availability in case of any failure in the server.

